

# Series WCV Check Valve

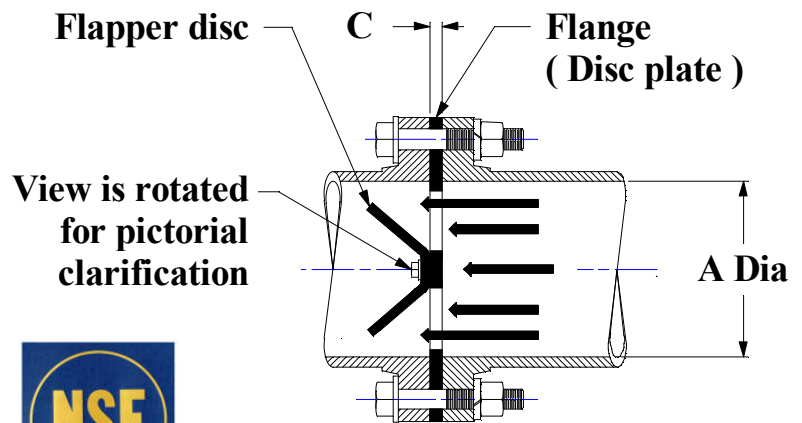
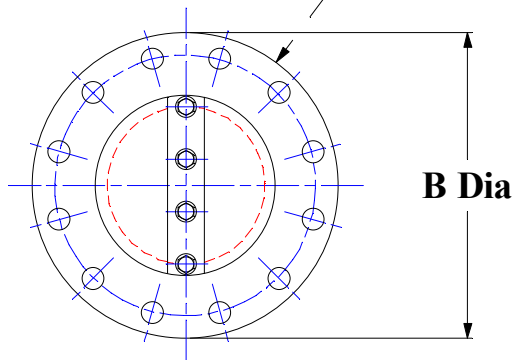
## Wafer-Style Check Valve

- The Wafer-style series WCV Check valve is an entirely new valve design specifically engineered for water application. The WCV Check valve operates solely on line pressure and back pressure to open and close, no outside energy source is required. As line pressure builds, the elastomeric flapper disc is pushed away, allowing the water to pass. The memory of the rubber will cause the flapper disc to return flat, and back pressure will seal the flapper against the plate to prevent back-flow. The WCV Check valve is designed to be inserted between two mating flanges.



- Material of construction
  - Flapper disc : Pure gum rubber  
EPDM(NSF certified), Buna-N(NSF certified)
  - Disc plate : Epoxy coated carbon steel (standard)  
304 or 316 stainless steel (optional)
- Installation : For horizontal pipe, orient the center rib in vertical position as shown below. For vertical pipe, WCV check valve shall be installed for “Flow Up”

Flange is 125#ANSI standard Flat Face



All dimensions are in inches.

Size	4	5	6	8	10	12	14	16	18	20	24	30	36
A	4.00	5.00	6.00	7.90	10.00	12.00	13.25	15.25	17.25	19.25	23.25	29.25	35.25
B	9.00	10.00	11.00	13.50	16.00	19.00	21.00	23.50	25.00	27.50	32.00	38.75	46.00
C	0.50				0.62			0.75			1.00		
Cv	350	620	800	1500	3060	4100	5100	7000	9500	12000	23500	40000	60000

Dimensions are subject to change without notice.