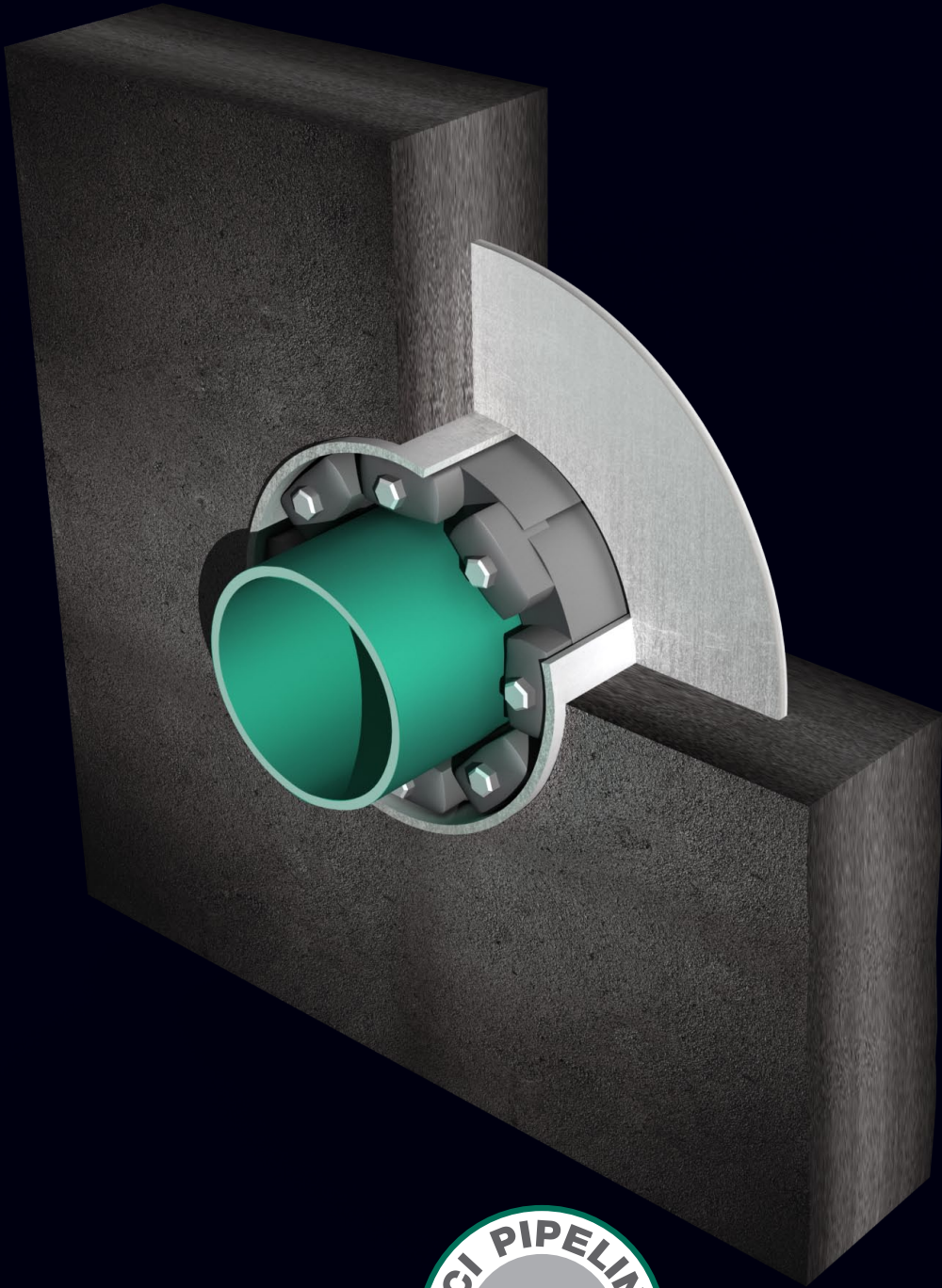


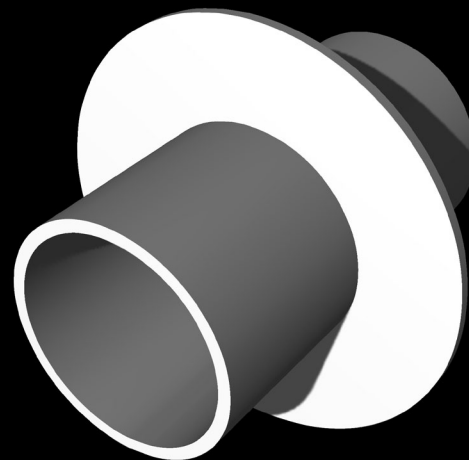
WALL SLEEVES



CCI PIPELINE SYSTEMS
PIPE PROTECTION PRODUCTS

CCI has your solution to all of your sealing needs when it comes to wall penetration. Our complete sealing system includes Wrap-It Link™ Wall Penetration Seals and Wall Sleeves with water stops. Working together, these products will provide you with the necessary seal for your piping system.

Wall damage, often caused by vibration of utility piping or pipe repair, can easily be avoided using CCI's wall sleeves. Providing a seal that cannot be matched by core drilled holes, our wall sleeves are the answer to your sealing problems. CCI's wall sleeves have been specifically designed to pair with Wrap-It Link™ Wall Penetration Seals for a leak resistant sealing system.



SPECIFICATIONS

- 2"-24" diameter x 12" length standard
Special sizes available
- 2" standard water stop
- Water stop continuously welded on both sides

MATERIAL

- A53 B STD Steel
- PVC

FINISH

- Plain (Bare Steel)
- Primer Coated (Black Primer)
- Hot Dipped Galvanized

ORDERING INFORMATION

WS - PR - 1212

Wall Sleeve w/ Water Stop Primer Coated Nominal Pipe Size Sleeve Length

PR - Primer Coated **CS** - Bare Carbon Steel
GV - Galvanized **PL** - Plastic

STEEL WALL SLEEVES

| NOMINAL SLEEVE SIZE (IN.) | SLEEVE ID (IN.) |
|---------------------------|-----------------|
| 2 | 2.06 |
| 2 ½ | 2.46 |
| 3 | 3.06 |
| 3 ½ | 3.54 |
| 4 | 4.02 |
| 6 | 6.06 |
| 8 | 7.98 |
| 10 | 10.02 |
| 12 | 12.00 |
| 14 | 13.25 |
| 16 | 15.25 |
| 18 | 17.25 |
| 20 | 19.25 |
| 22 | 21.25 |
| 24 | 23.25 |

PVC WALL SLEEVES

| NOMINAL SLEEVE SIZE (IN.) | SLEEVE ID (IN.) |
|---------------------------|-----------------|
| 2 | 2.06 |
| 2 ½ | 2.46 |
| 3 | 3.06 |
| 4 | 4.02 |
| 6 | 5.89 |
| 8 | 7.84 |
| 10 | 9.80 |
| 12 | 11.76 |
| 15 | 14.70 |
| 18 | 17.96 |
| 21 | 21.18 |
| 24 | 23.83 |

* Schedule 40 sizes also available upon request.

CCI offers both Carbon Steel and PVC standard wall sleeves in 12" lengths with 2" water stops. Standard diameters, 2" through 24", are stocked and ready for immediate shipment. Custom diameters and lengths are also available upon request.

CCI PIPELINE SYSTEMS, LLC

BREAUX BRIDGE, LA

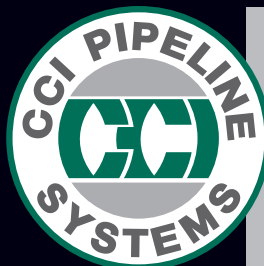
Tele: (337) 332-5808
Fax: (337) 332-5809

HOUSTON, TX

Tele: (281) 350-2100
Fax: (337) 332-5809

Website: www.ccipipe.com • Email: sales@ccipipe.com
1058 O'Neal Drive • Breaux Bridge, LA 70517

800-867-2772



Representative