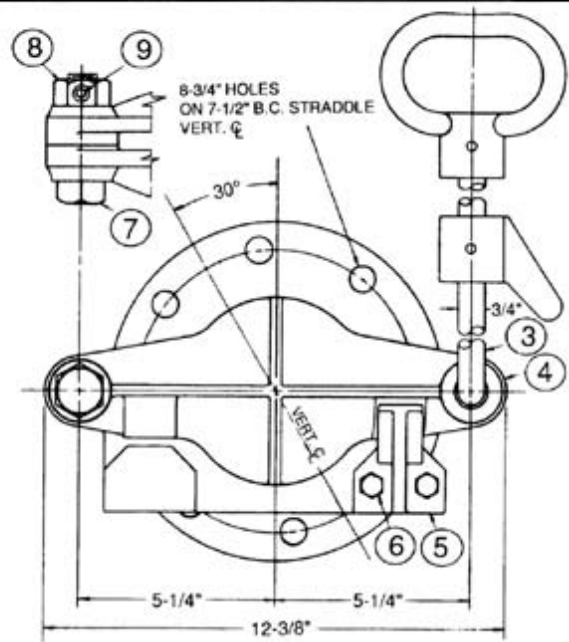
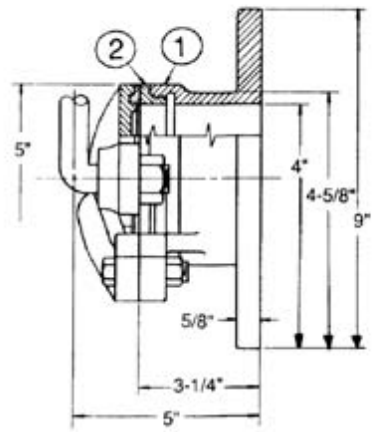


PARTS LIST					
ITEM	DESCRIPTION	REQ'D	MATERIAL	ASTM	
1	BODY	1	CAST IRON	A126	CL B
2	SEAT RING	1	BRONZE	B 62	
3	LIFT HANDLE	1	STEEL	A107	GR. 115
4	DISC W/BR DISC RING	1	CAST IRON	A126	CL B
5	RIGHT HAND WEDGE	1	CAST IRON	A126	CL B
6	WEDGE BOLT	2	STEEL		ASA B18.2
7	HINGE BOLT	2	BRONZE	B 62	
8	HINGE BOLT NUT	2	BRONZE	B 62	
9	SET SCREW	1	STEEL		PLATED



FURNISHED WITH TWO FOOT LIFT HANDLE AND CATCH (A-25215)

LONGER LIFT HANDLE FURNISHED WHEN SPECIFIED

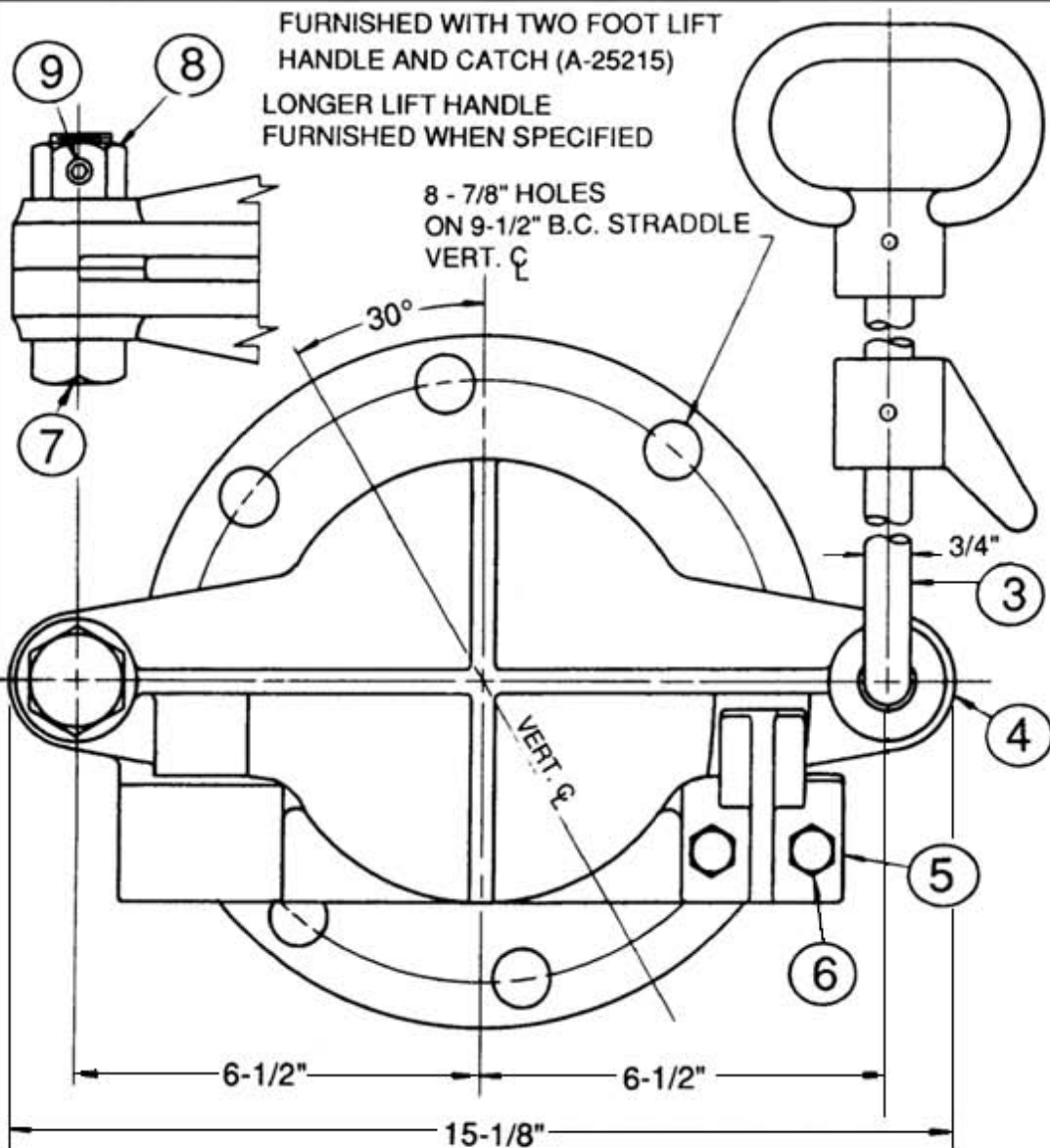


4" • SHEAR GATE • FLANGE END • SINGLE WEDGE

FURNISHED WITH TWO FOOT LIFT
HANDLE AND CATCH (A-25215)

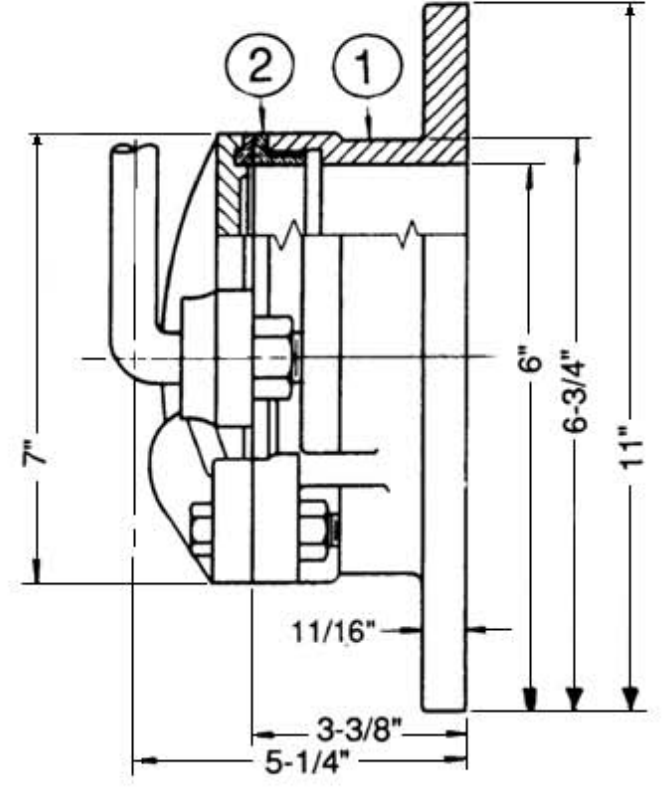
LONGER LIFT HANDLE
FURNISHED WHEN SPECIFIED

8 - 7/8" HOLES
ON 9-1/2" B.C. STRADDLE
VERT. C



PARTS LIST

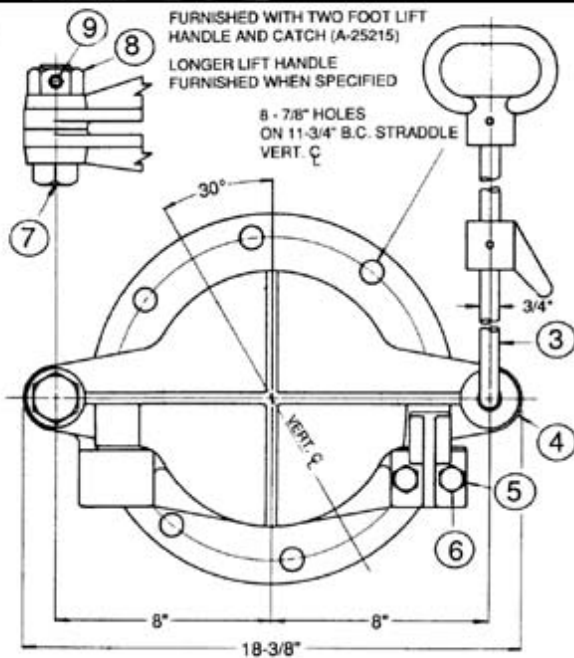
ITEM	DESCRIPTION	REQ'D	MATERIAL	ASTM	
1	BODY	1	CAST IRON	A126	CL B
2	SEAT RING	1	BRONZE	B 62	
3	LIFT HANDLE	1	STEEL	A107	GR. III15
4	DISC W/BR DISC RING	1	CAST IRON	A126	CL.B
5	RIGHT HAND WEDGE	1	CAST IRON	A126	CL.B
6	WEDGE BOLT	2	STEEL		ASA B18.2
7	HINGE BOLT	1	BRONZE	B 62	
8	HINGE BOLT NUT	1	BRONZE	B 62	
9	SET SCREW	1	STEEL		PLATED



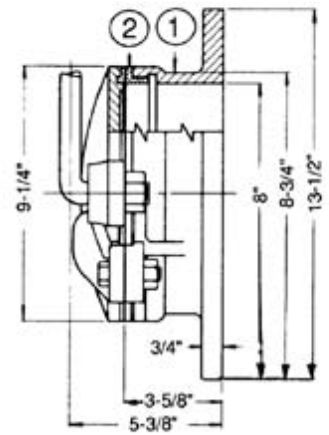
6" SHEAR GATE • FLANGE
END • SINGLE WEDGE
A-2522-6

E-3310

REPLACES DWG. NO. E-3310 BY H.N.H. 5-15-42

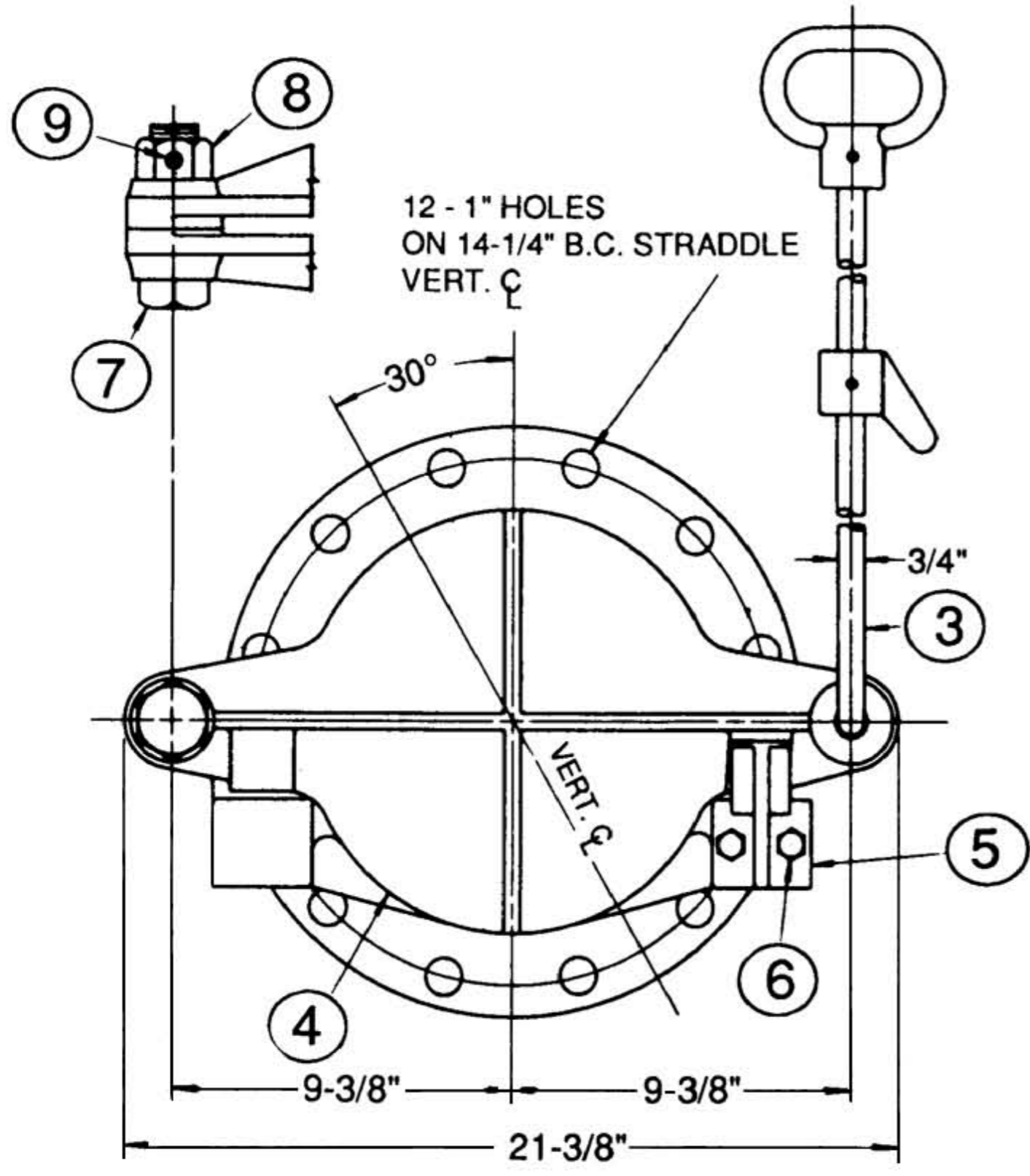


PARTS LIST					
ITEM	DESCRIPTION	REQ'D	MATERIAL	ASTM	
1	BODY	1	CAST IRON	A126	CL B
2	SEAT RING	1	BRONZE	B62	
3	LIFT HANDLE	1	STEEL	A107	GR-1115
4	DISC W/ BR DISC RING	1	CAST IRON	A126	CL B
5	RIGHT HAND WEDGE	1	CAST IRON	A126	CL B
6	WEDGE BOLT	2	STEEL		ASA B182
7	HINGE BOLT	1	BRONZE	B62	
8	HINGE BOLT NUT	1	BRONZE	B62	
9	SET SCREW	1	STEEL		PLATED



8" SHEAR GATE - FLANGE END - SINGLE WEDGE
 A-2520-6

DWG. NO. E-3352 10" A-2520-6 SHEAR GATE - FLANGE END - SINGLE WEDGE

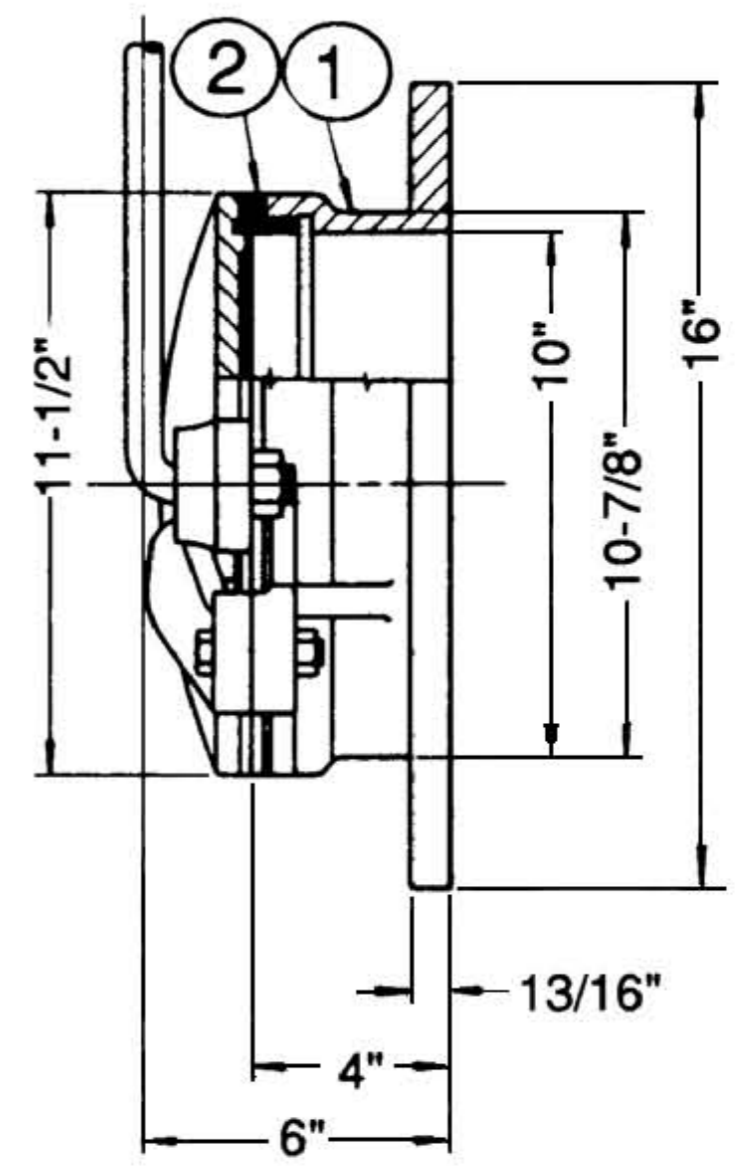


FURNISHED WITH TWO FOOT LIFT HANDLE AND CATCH (A-25215)

LONGER LIFT HANDLE FURNISHED WHEN SPECIFIED

REPLACES DWG. NO. E-3352 BY E.M.M. 6-19-40

PARTS LIST					
ITEM	DESCRIPTION	REQ'D.	MATERIAL	ASTM	
1	BODY	1	CAST IRON	A126	CL. B
2	SEAT RING	1	BRONZE	B62	
3	LIFT HANDLE	1	STEEL	A107	GR.-III5
4	DISC W/ BR. DISC RING	1	CAST IRON	A126	CL. B
5	RIGHT HAND WEDGE	1	CAST IRON	A126	CL. B
6	WEDGE BOLT	2	STEEL		ASA B18.2
7	HINGE BOLT	1	BRONZE	B62	
8	HINGE BOLT NUT	1	BRONZE	B62	
9	SET SCREW	1	STEEL		PLATED

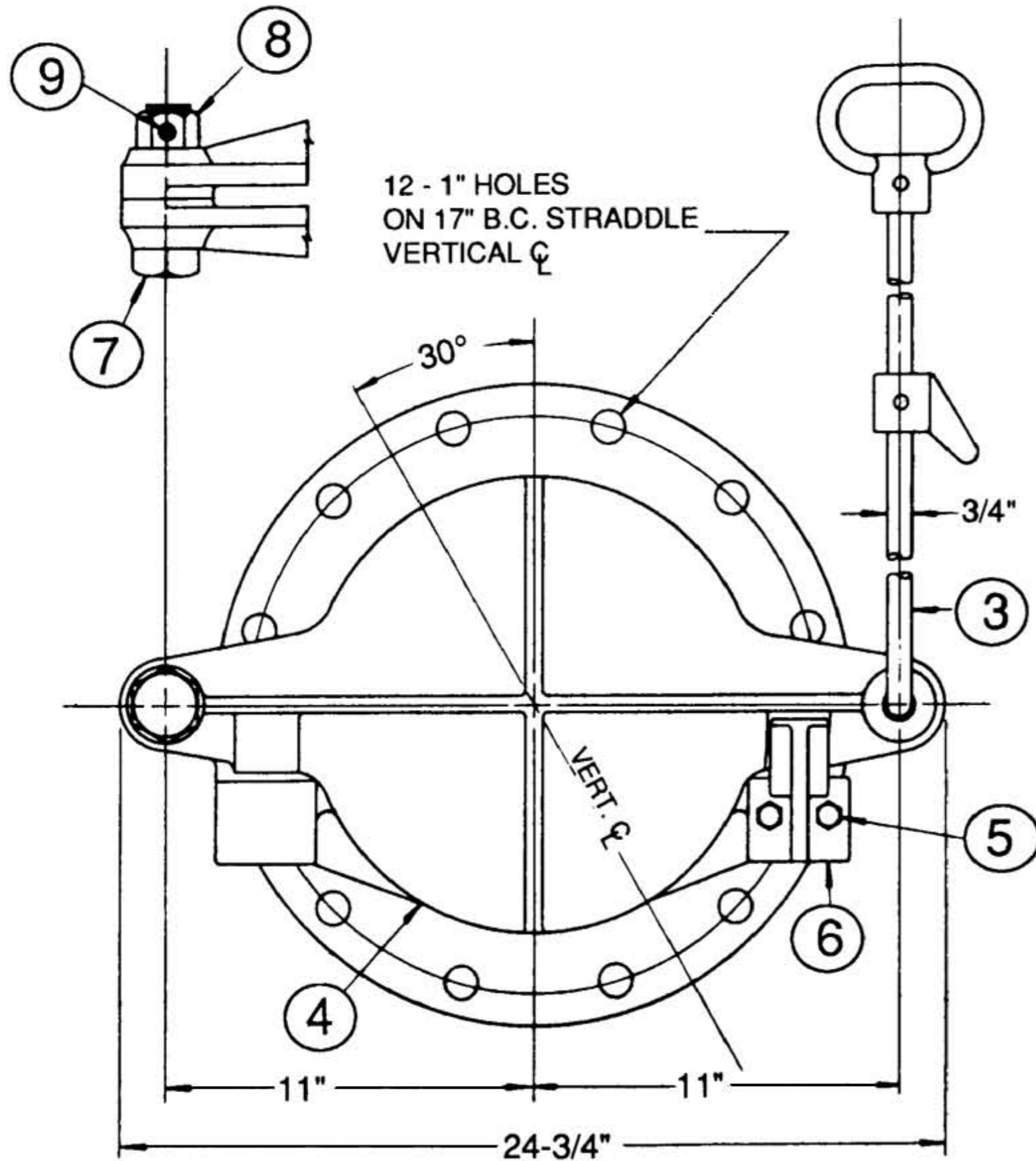


ORTON 6-14-65
ZFR 6-8-66
RLR 6-8-66
ZFR 6-8-66

TROY VALVE
TROY, PA.

10" SHEAR GATE • FLANGE END • SINGLE WEDGE

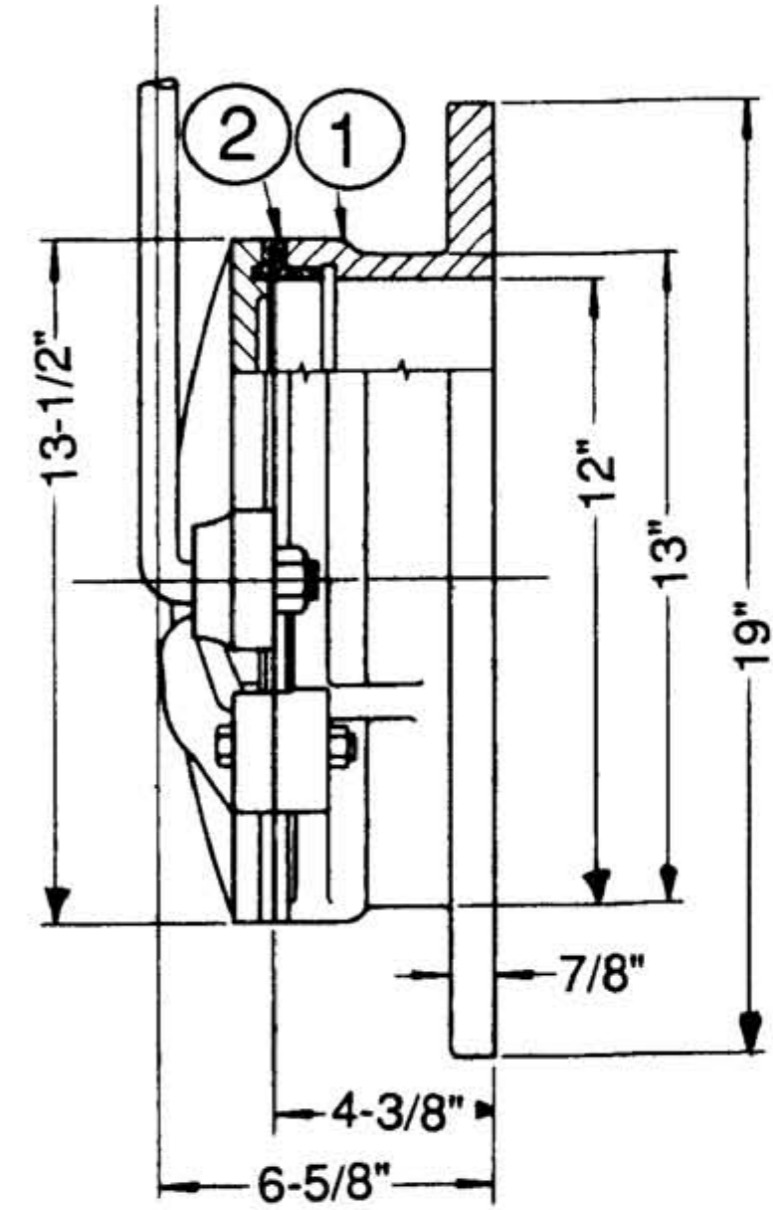
A-2520-6 E-3352



FURNISHED WITH TWO FOOT LIFT
HANDLE AND CATCH (A-25215)

LONGER LIFT HANDLE
FURNISHED WHEN SPECIFIED

PARTS LIST					
ITEM	DESCRIPTION	REQ'D	MATERIAL	ASTM	
1	BODY	1	CAST IRON	A126	CL.B
2	SEAT RING	1	BRONZE	B62	
3	LIFT HANDLE	1	STEEL	A107	GR.-III5
4	DISC W/BR. DISC RING	1	CAST IRON	A126	CL.B
5	WEDGE BOLT	2	STEEL		ASA B18.2
6	RIGHT HAND WEDGE	1	CAST IRON	A126	CL.B
7	HINGE BOLT	1	BRONZE	B62	
8	HINGE BOLT NUT	1	BRONZE	B62	
9	SET SCREW	1	STEEL		PLATED

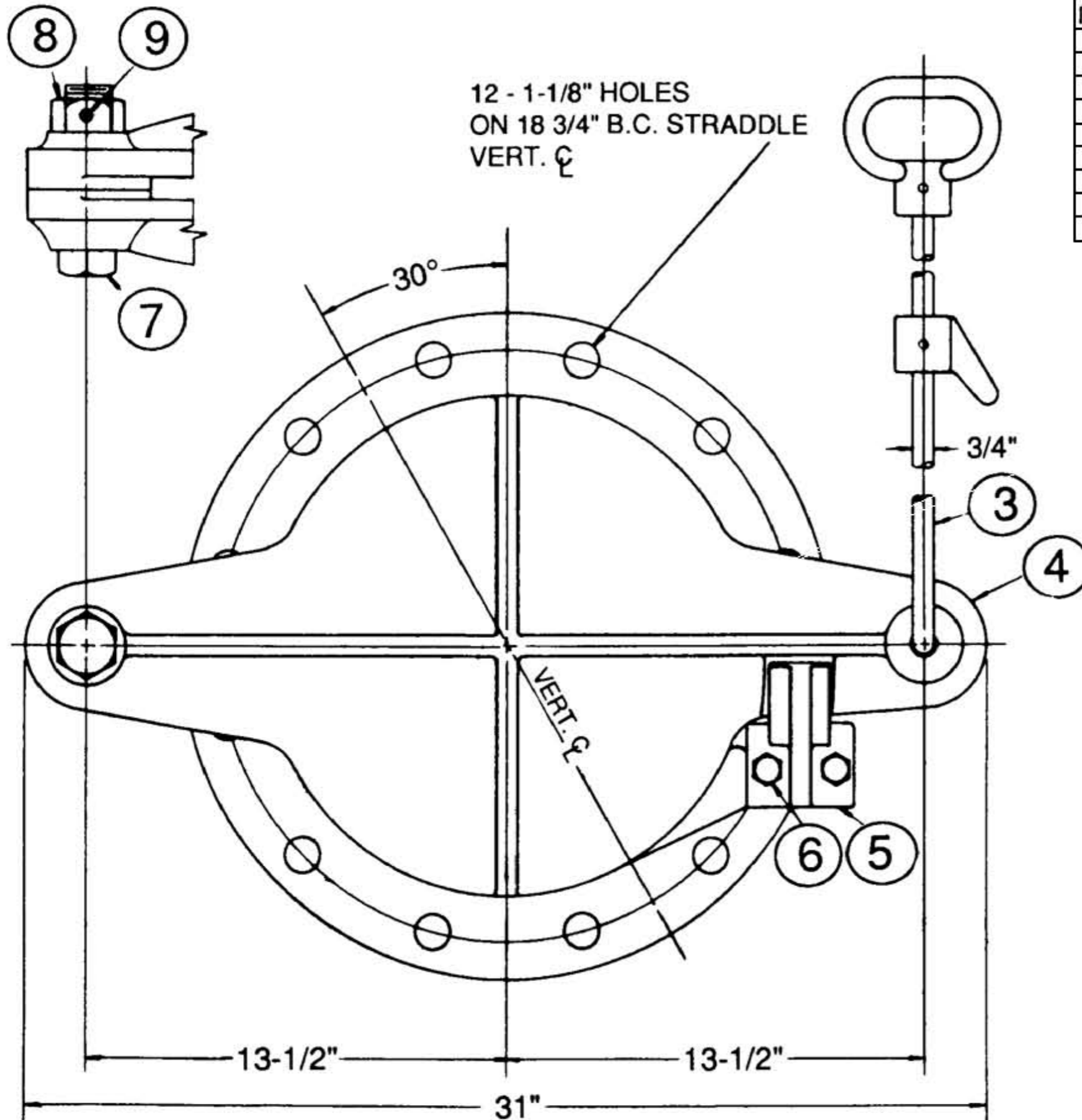


ELLIS 6-21-65
ORTON 6-8-66
RLR 6-8-66
ZFR 6-8-66

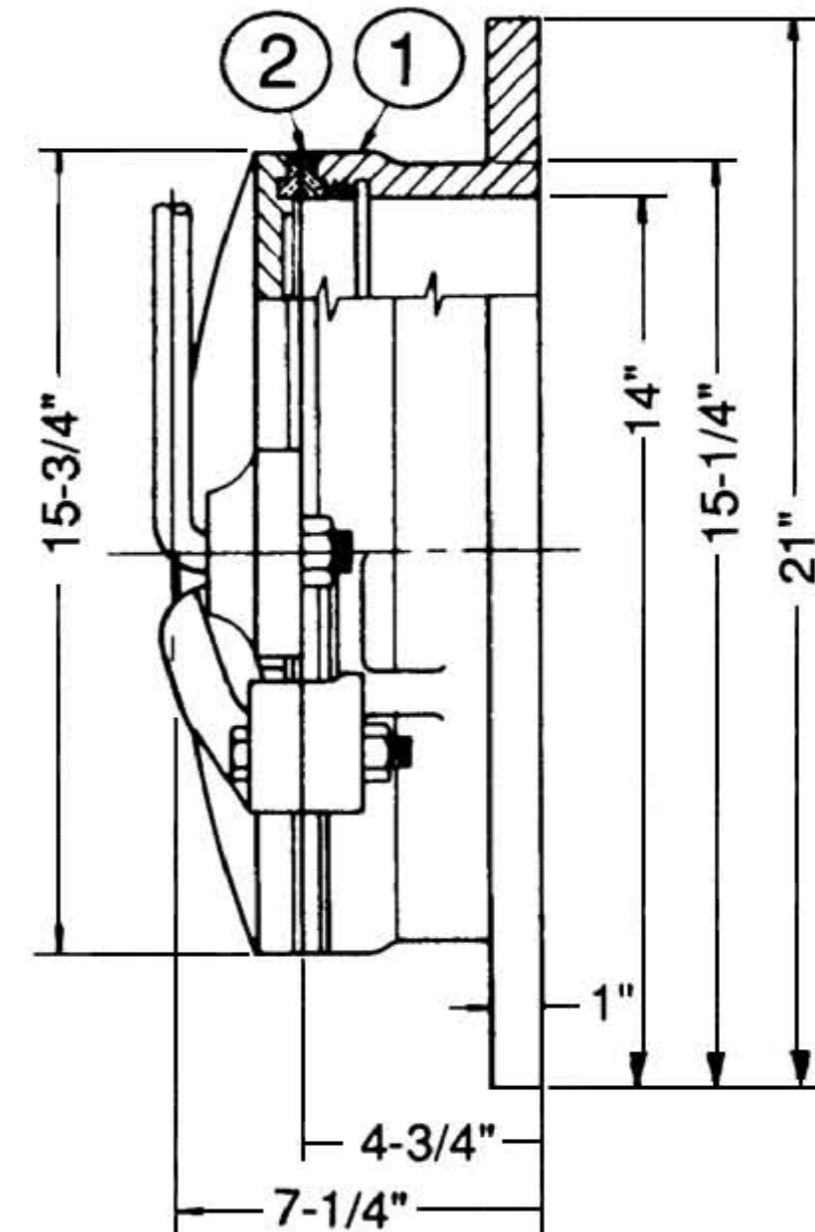
TROY VALVE 12" SHEAR GATE • FLANGE
TROY, PA. END • SINGLE WEDGE
A-2520-6 E-3306

REPLACES DWG. NO. E-3306 BY E.M. 7-19-40

DWG. NO. E-3353 14" A-2520-6 SHEAR GATE - FLANGE END - SINGLE WEDGE



PARTS LIST					
ITEM	DESCRIPTION	REQ'D	MATERIAL	ASTM	
1	BODY	1	CAST IRON	A126	CL. B
2	SEAT RING	1	BRONZE	B 62	
3	LIFT HANDLE	1	STEEL	A107	GR. III5
4	DISC W/BR. DISC RING	1	CAST IRON	A126	CL. B
5	RIGHT HAND WEDGE	1	CAST IRON	A126	CL. B
6	WEDGE NUT	2	STEEL		ASA B1&2
7	HINGE BOLT	1	BRONZE	B 62	
8	HINGE BOLT NUT	1	BRONZE	B 62	
9	SET SCREW	1	STEEL		PLATED



T.R.J. 7-1-65
E.R. 8-13-65
RLR 6-8-66
ZFR 6-8-66

FURNISHED WITH TWO FOOT LIFT
HANDLE AND CATCH (A-25215)

LONGER LIFT HANDLE
FURNISHED WHEN SPECIFIED

REPLACES DWG. NO. E-3353 BY M.L.O. 7-20-51

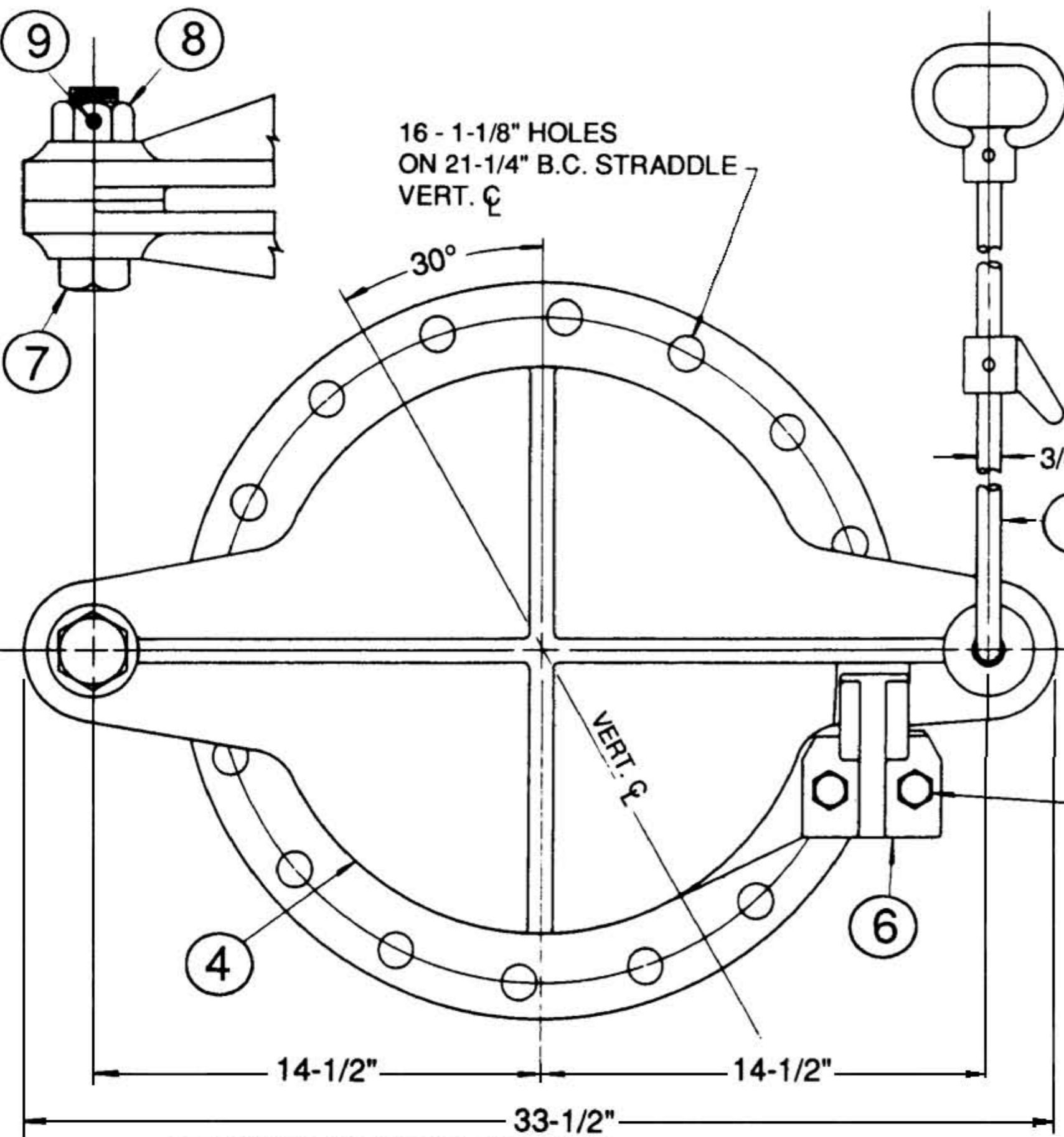
TROY VALVE
TROY, PA.

14" SHEAR GATE • FLANGE
END • SINGLE WEDGE

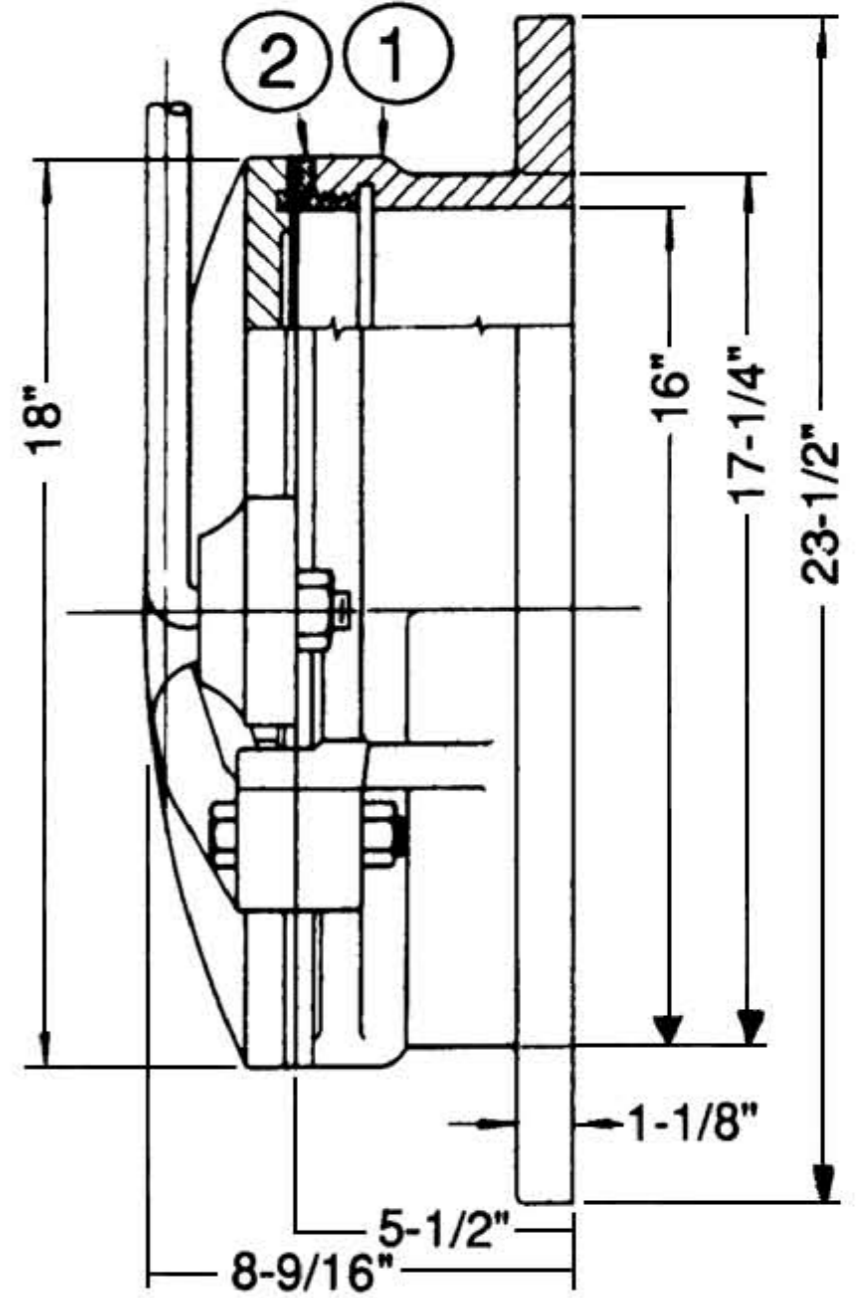
A-2520-6

E-3353

DWG. NO. E-3355 16" A-2520-6 SHEAR GATE - FLANGE END - SINGLE WEDGE



PARTS LIST					
ITEM	DESCRIPTION	REQ'D	MATERIAL	ASTM	
1	BODY	1	CAST IRON	A126	CL. B
2	SEAT RING	1	BRONZE	B62	
3	LIFT HANDLE	1	STEEL	A107	GR. III5
4	DISC W/BR. DISC RING	1	CAST IRON	A126	CL. B
5	WEDGE BOLT	2	STEEL		ASA B18.2
6	RIGHT HAND WEDGE	1	CAST IRON	A126	CL. B
7	HINGE BOLT	1	BRONZE	B62	
8	HINGE BOLT NUT	1	BRONZE	B62	
9	SET SCREW	1	STEEL		PLATED



FURNISHED WITH TWO FOOT LIFT HANDLE AND CATCH (A-25215)
LONGER LIFT HANDLE FURNISHED WHEN SPECIFIED

REPLACES DWG. NO. E-3355 BY J.D.K. 8-7-57

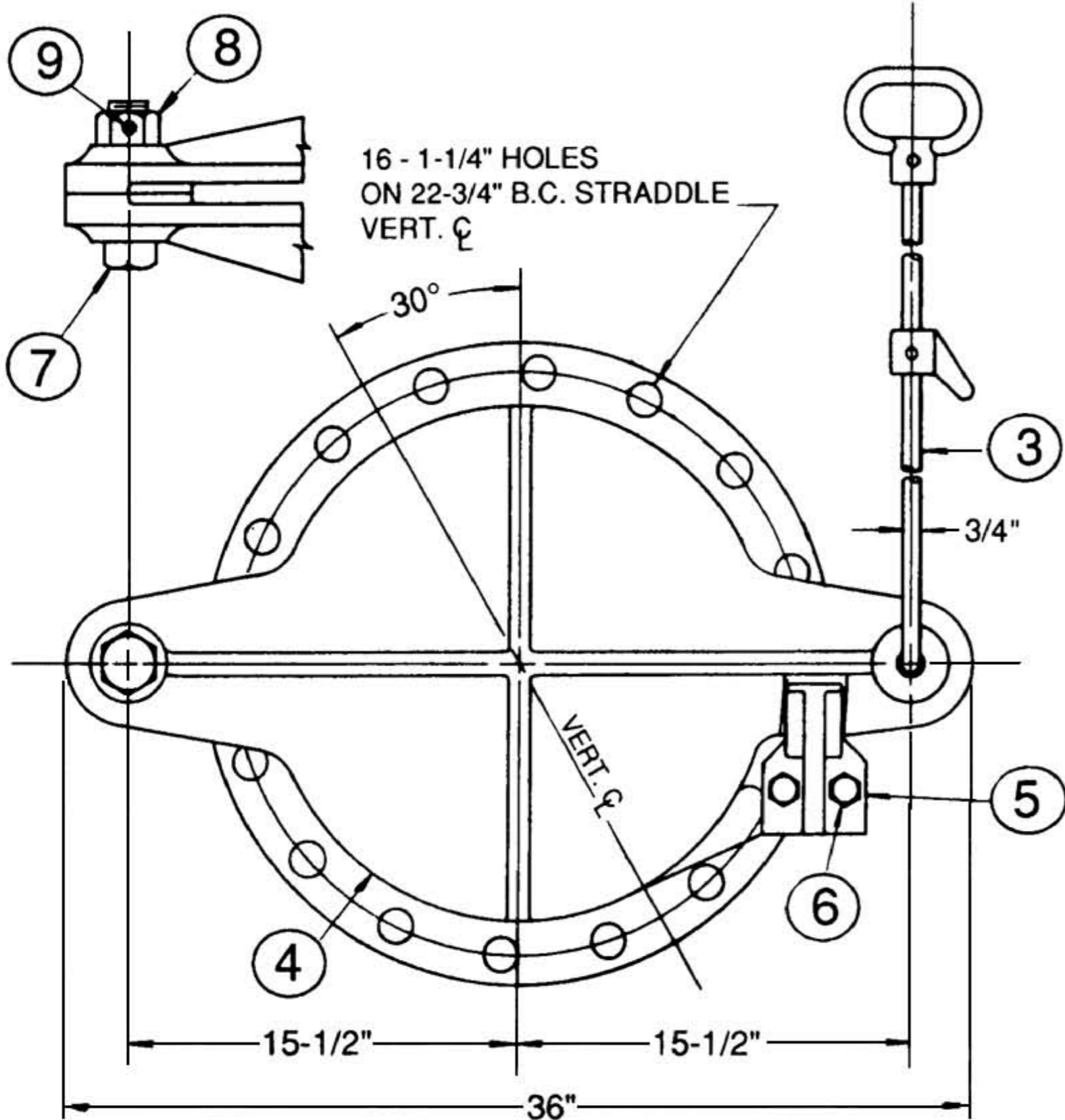
ELLIS 7-2-65
ORTON 6-7-66
RLR 6-8-66
ZFR 6-8-66

TROY VALVE
TROY, PA.

16" SHEAR GATE • FLANGE END • SINGLE WEDGE
A-2520-6

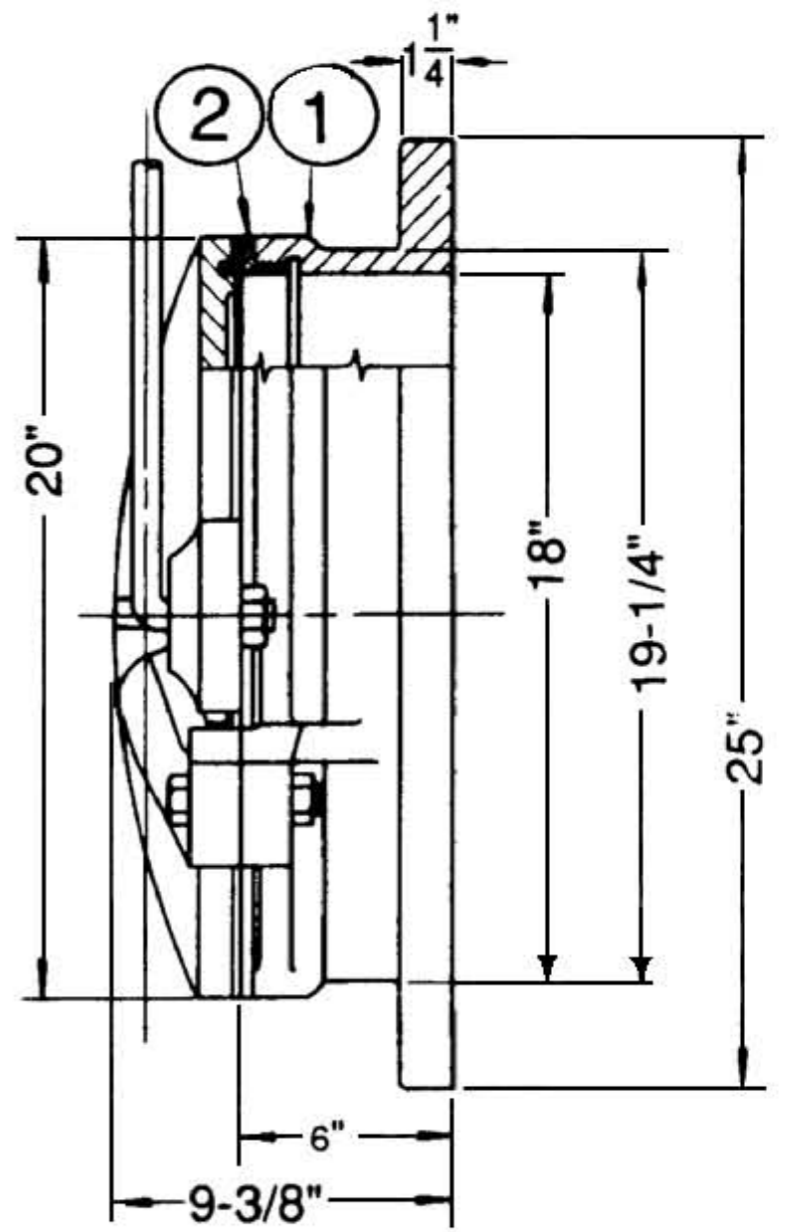
E-3355

DWG. NO. E-3417 18" A-2520-6 SHEAR GATE - FLANGE END - SINGLE WEDGE



FURNISHED WITH TWO FOOT LIFT
HANDLE AND CATCH (A-25215)
LONGER LIFT HANDLE
FURNISHED WHEN SPECIFIED

PARTS LIST					
ITEM	DESCRIPTION	REQ'D	MATERIAL	ASTM	
1	BODY	1	CAST IRON	A126	CL. B
2	SEAT RING	1	BRONZE	B62	
3	LIFT HANDLE	1	STEEL	A107	GR. III5
4	DISC W/BR. DISC RING	1	CAST IRON	A126	CL. B
5	RIGHT HAND WEDGE	1	CAST IRON	A126	CL. B
6	WEDGE NUT	2	STEEL		ASA B1&2
7	HINGE BOLT	1	BRONZE	B62	
8	HINGE BOLT NUT	1	BRONZE	B62	
9	SET SCREW	1	STEEL		PLATED



ELLIS 7-6-65
ORTON 6-7-66
RLR 6-8-66
ZFR 6-8-66

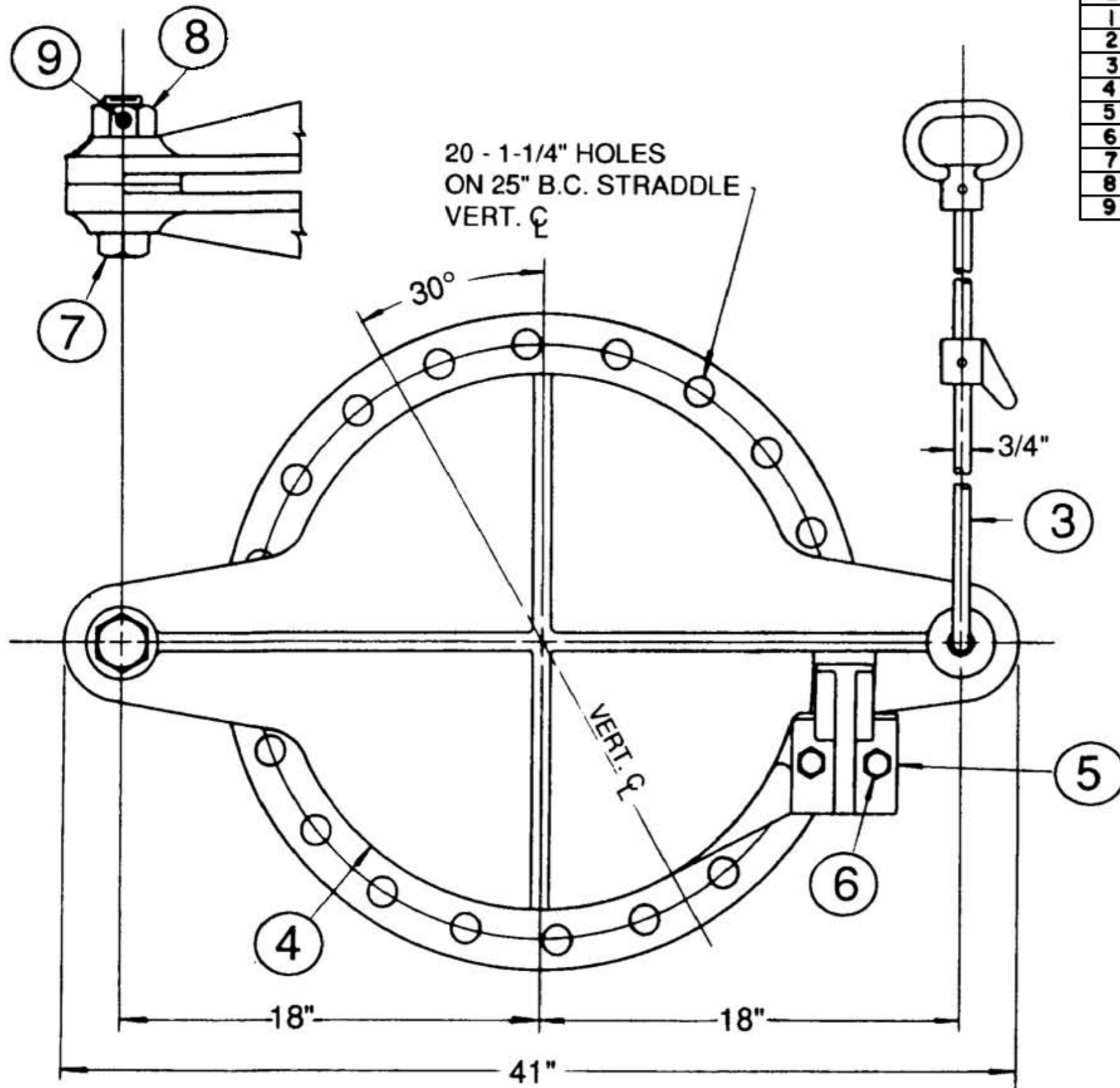
TROY VALVE
TROY, PA.

18" SHEAR GATE • FLANGE
END • SINGLE WEDGE
A-2520-6

REPLACES DWG. NO. E-3417 BY M.L.O. 8-15-50

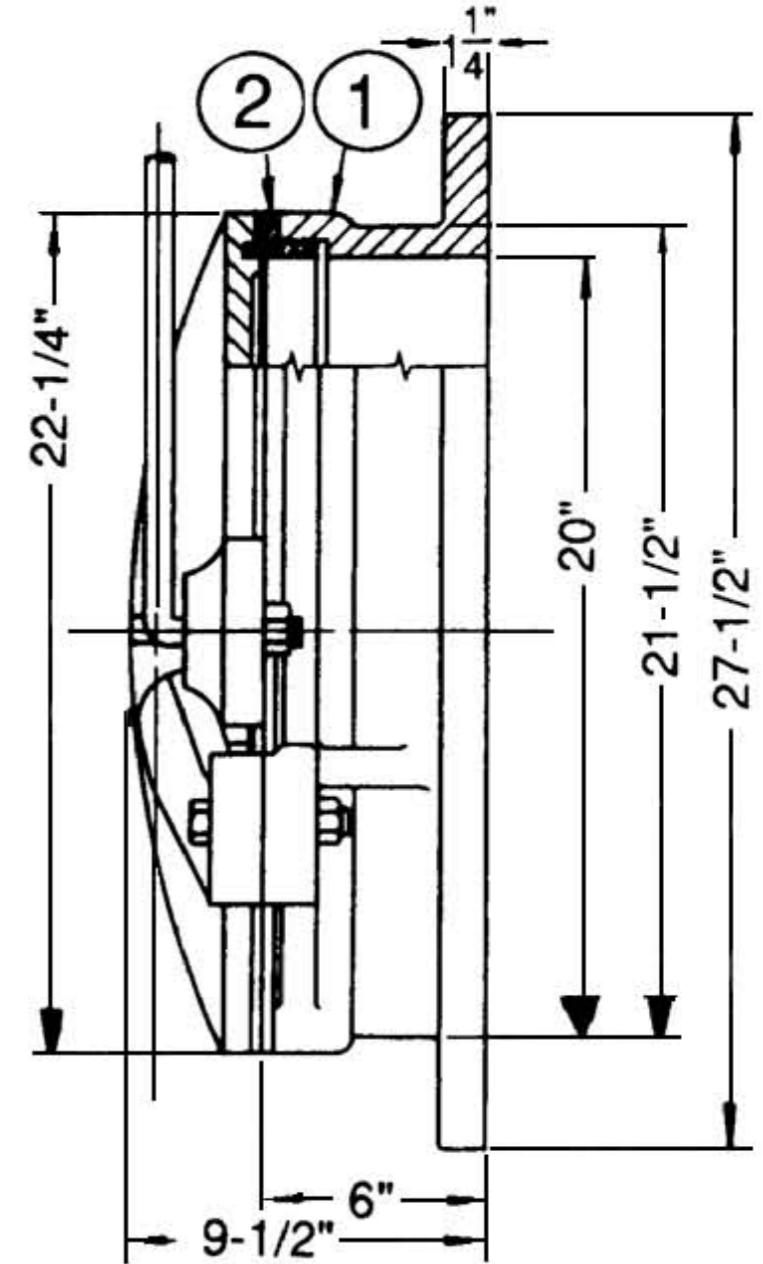
E-3417

DWG. NO. E-3318 20" A-2520-6 SHEAR GATE - FLANGE END - SINGLE WEDGE



FURNISHED WITH TWO FOOT LIFT
HANDLE AND CATCH (A-25215)
LONGER LIFT HANDLE
FURNISHED WHEN SPECIFIED
REPLACES DWG. NO. E-3318 BY M.L.O. 5-13-52

PARTS LIST					
ITEM	DESCRIPTION	REQ'D	MATERIAL	ASTM	
1	BODY	1	CAST IRON	A126	CL. B
2	SEAT RING	1	BRONZE	B62	
3	LIFT HANDLE	1	STEEL	A107	GR. III5
4	DISC W/BR DISC RING	1	CAST IRON	A126	CL. B
5	RIGHT HAND WEDGE	1	CAST IRON	A126	CL. B
6	WEDGE NUT	2	STEEL		ASA B18.2
7	HINGE BOLT	1	BRONZE	B62	
8	HINGE BOLT NUT	1	BRONZE	B62	
9	SET SCREW	1	STEEL		PLATED



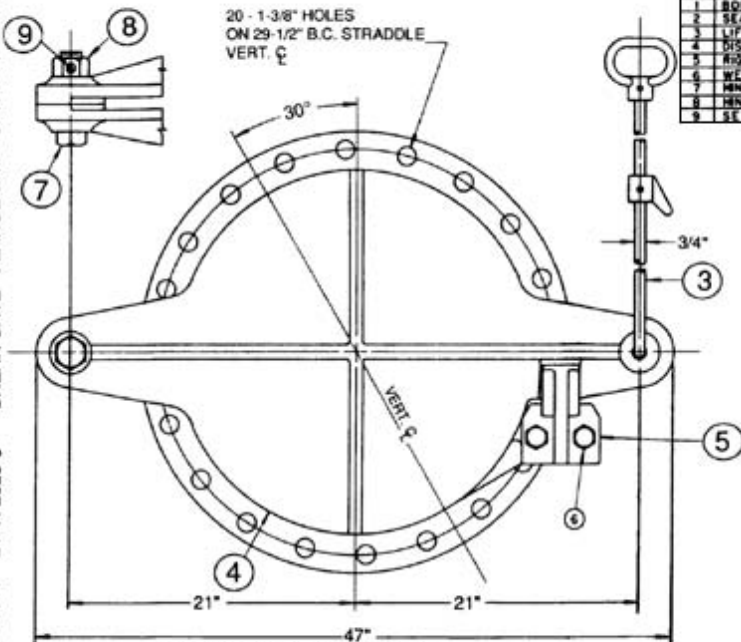
ELLIS 7-7-65
ORTON 6-7-66
RLR 6-8-66
ZFR 6-8-66

TROY VALVE
TROY, PA.

20" SHEAR GATE • FLANGE
END • SINGLE WEDGE

A-2520-6 E-3318

DWG. NO. E-3311 24" A-2520-6 SHEAR GATE - FLANGE END - SINGLE WEDGE

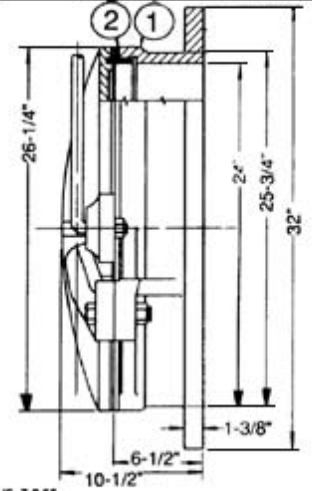


20 - 1-3/8" HOLES
ON 29-1/2" B.C. STRADDLE
VERT. C

FURNISHED WITH TWO FOOT LIFT
HANDLE AND CATCH (A-25215)
LONGER LIFT HANDLE
FURNISHED WHEN SPECIFIED

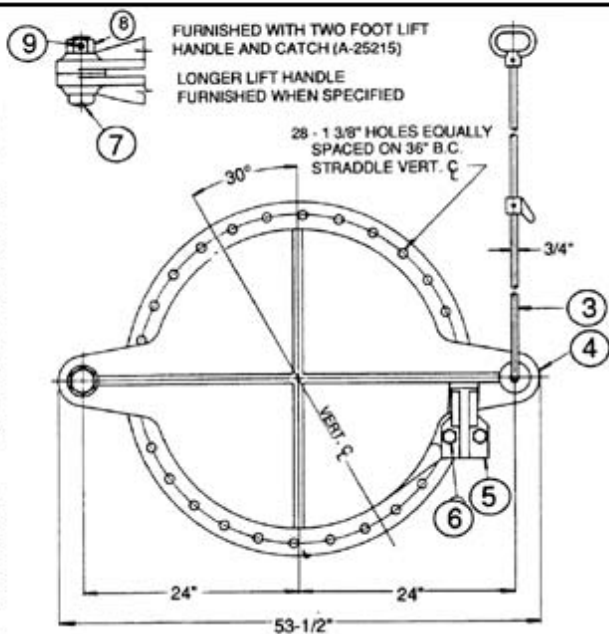
REPLACES DWG. NO. E-3311 BY J.D.K. 7-26-56

PARTS LIST				
ITEM	DESCRIPTION	REQD	MATERIAL	ASTM
1	BODY	1	CAST IRON	A126 CL B
2	SEAT RING	1	BRONZE	B62
3	LIFT HANDLE	1	STEEL	A107 GR 105
4	DISC W/BL DISC RING	1	CAST IRON	A126 CL B
5	RIGHT HAND WEDGE	1	CAST IRON	A126 CL B
6	WEDGE BOLT	2	STEEL	ASA B18.2
7	HINGE BOLT	1	BRONZE	B62
8	HINGE BOLT NUT	1	BRONZE	B62
9	SET SCREW	1	STEEL	PLATED

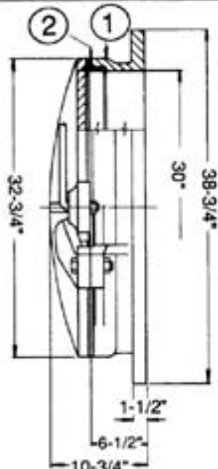


ELLIS 7-9-65
ONTON 6-8-66
D.L. R 6-8-66
Z/R 6-8-66

TROY VALVE
TROY, PA.
24" SHEAR GATE - FLANGE
END - SINGLE WEDGE
A-2520-6 E-3311



PARTS LIST					
ITEM	DESCRIPTION	REQ'D	MATERIAL	ASTM	
1	BODY	1	CAST IRON	A126	CL. B
2	SEAT RING	1	BRONZE	B62	
3	LIFT HANDLE	1	STEEL	A107	GR III5
4	DISC W/BR DISC RING	1	CAST IRON	A126	CL. B
5	RIGHT HAND WEDGE	1	CAST IRON	A126	CL. B
6	WEDGE BOLT	2	STEEL		ASA B6-2
7	HINGE BOLT	1	BRONZE	B62	
8	HINGE BOLT NUT	1	BRONZE	B62	
9	SET SCREW	1	STEEL		PLATED



ELR 7965
DXTM GCGG
RLB L-B-66
ZFW 8844

TROY VALVE 30° SHEAR GATE - FLANGE
TROY, PA. END - SINGLE WEDGE
A-2520-6

REPLACES DWG. NO. E-3361 BY R.L.B. 9-22-39

E-3361